

High Pressure Compressed Gas Filter

72 - 31,476 SCFM

5000 psi - 345 bar

CGF50

Description

For the gas compression manufacturers and designers who are seeking a cost effective filtration solution, the CGF50 is a high pressure compressed gas filter that provides robust and reliable filtration at a competitive price. Unlike other compressed gas filters, the CGF50 relies on a pleated media construction for a higher efficiency and greater dirt holding capacity

Features and Benefits

- SG Cast Iron construction with electroless nickel plating and epoxy painted exterior provide superior corrosion resistance and durability in outdoor installations.
- Radial bowl-to-head seal ensures reliable sealing that is not sensitive to variations in bowl torque.
- Integral threaded mounting holes on the top of the filter head allow for flexibility in mounting and plumbing.
- Engraved flow direction arrow and laser engraved data tag provide durable markings for clear identification through the life of the installation.
- SAE -6 O-Ring Boss drain plug is standard for all housing sizes.
- Upstream and downstream test points available.

Applications



Point of Use Fuel Dispensing



Fleet Fill / Bulk Fuel Transfer



Bulk Fuel Unloading



Protection for High-Flow Fuel Injection Systems



Virtual Pipelines

Markets



INDUSTRIAL



MOBILE VEHICLES



MINING TECHNOLOGY



AGRICULTURE



POWER GENERATION



COMMON RAIL INJECTOR SYSTEMS



FLEET



BULK FUEL FILTRATION

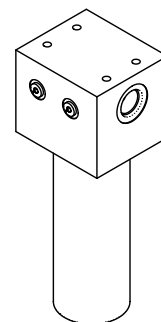
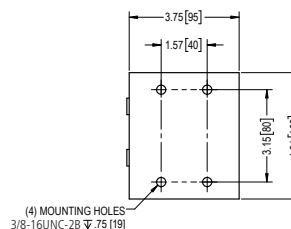
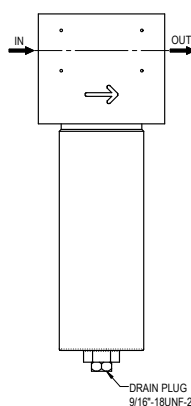
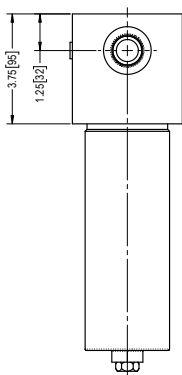
Filter Housing Specifications

Porting Size	1/4" through 2" NPTF, -4 through -32 SAE O-Ring Boss
Maximum Pressure	5000 psig (345 bar)
Min/Max Temperature	-20°F - 300°F (-28.9°C - 148.9°C)
Filtration Rating	0.01 µm 0.5 µm, 100 µm
Filter Media Type	Pleated Coalescing, Stainless Steel Water Separator
Housing Material	Head: SG Cast Iron Head Housing: Nickel-Plated Steel
Sealing Material	FKM (Viton®)

CGF50

Note: These rates are based on CNG. For compressed air, flow decreases by a factor of 1.2

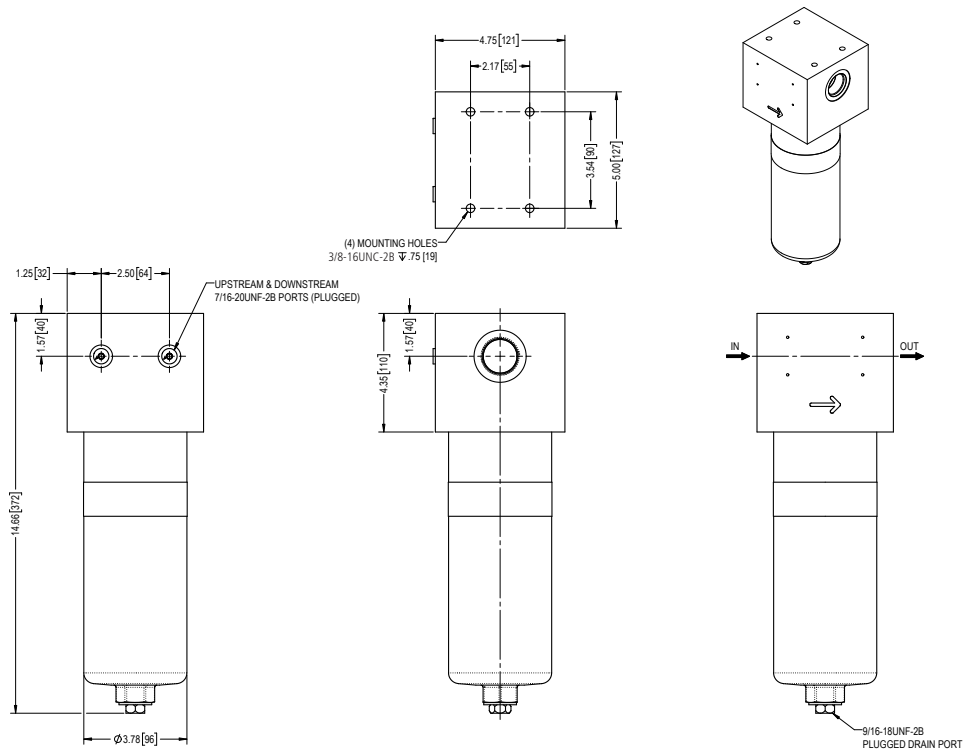
Technical drawing of the upper part of the probe, showing a cross-section and a side view. The cross-section shows two ports labeled "UPSTREAM & DOWNSTREAM 7/16-20UNF-2B (PLUGGED)". Dimensions include 1.15 [29] and 1.75 [44] for port spacing, 1.25 [32] for port diameter, and 12.15 [310] for the total height of the upper section. The side view shows a diameter of 2.88 [73] at the base.



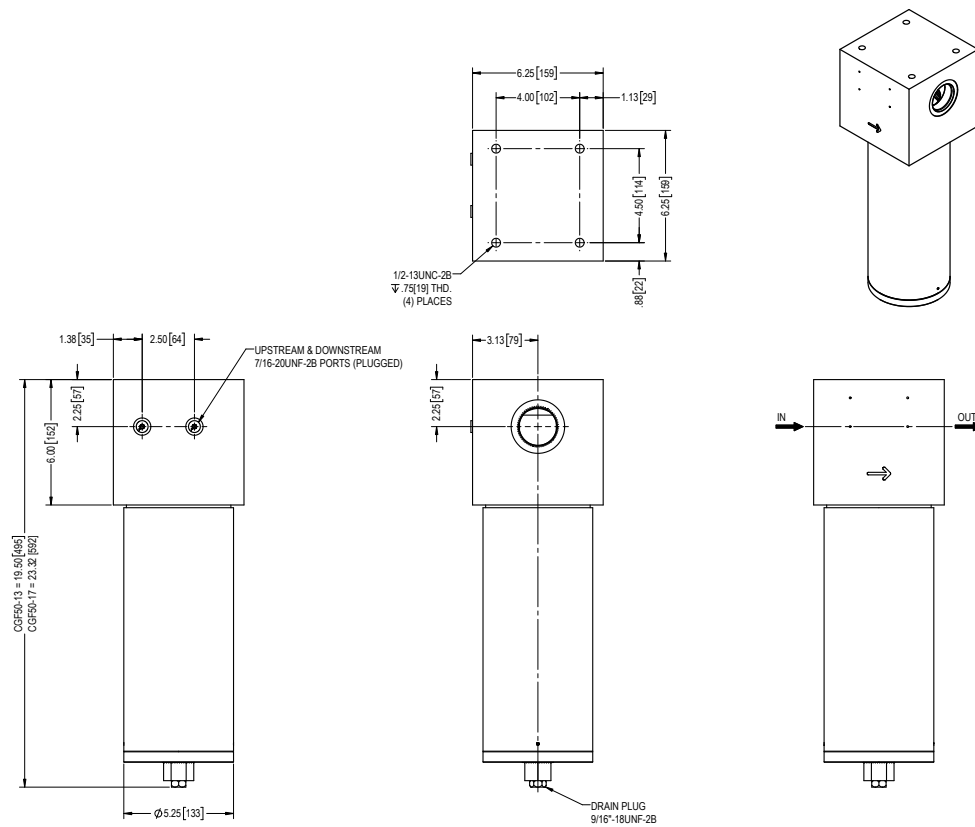
High Pressure Compressed Gas Filter

CGF50

Size 10



Size 13 & 17



High Pressure Compressed Gas Filter

CGF50

How to Build a Valid Model Number for a Schroeder CGF50:

<input type="text"/>	-	<input type="text"/>	-	<input type="text"/>	-	<input type="text"/>	-	<input type="text"/>	-	<input type="text"/>
Filter Series		Pressure		Housing Size		Filtration		Port Size		Accessories

Filter Series

CGF = Compressed Gas Filter

Pressure

50 = 5000 psig (345 bar) Maximum pressure

Housing Size

05 = 5" Element Length

09 = 9" Element Length

10 = 10" Element Length

13 = 13" Element Length

17 = 17" Element Length

Filtration

PC0.01 = Pleated Coalescing, 0.01 µm

PC0.5 = Pleated Coalescing, 0.5 µm

SWS100 = Stainless-Steel Water Separator, 100 µm

Port Size

P4 = 1/4" NPTF (Size 05 Only)

S4 = -4 SAE O-Ring Boss (Size 05 Only)

P8 = 1/2" NPTF (Size 05 & 09)

S8 = -8 SAE O-Ring Boss (Size 05 & 09)

P12 = 3/4" NPTF (Size 09 Only)

S12 = -12 SAE O-Ring Boss (Size 09 Only)

P16 = 1" NPTF (Size 10 Only)

S16 = -16 SAE O-Ring Boss (Size 10 Only)

P24 = 1 1/2" NPTF (Size 13 Only)

S24 = -24 SAE O-Ring Boss (Size 13 Only)

P32* = 2" NPT (Size 17 Only)

S32* = -32 SAE O-Ring Boss (Size 17 Only)

Accessories

N = None

H = Horizontal Drain Kit

V = Vertical Drain Kit

D = Differential Pressure Gauge Kit

NOTE: Replacement element part is a combination of Housing Size & Filtration